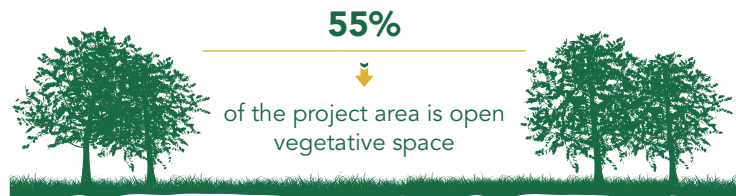
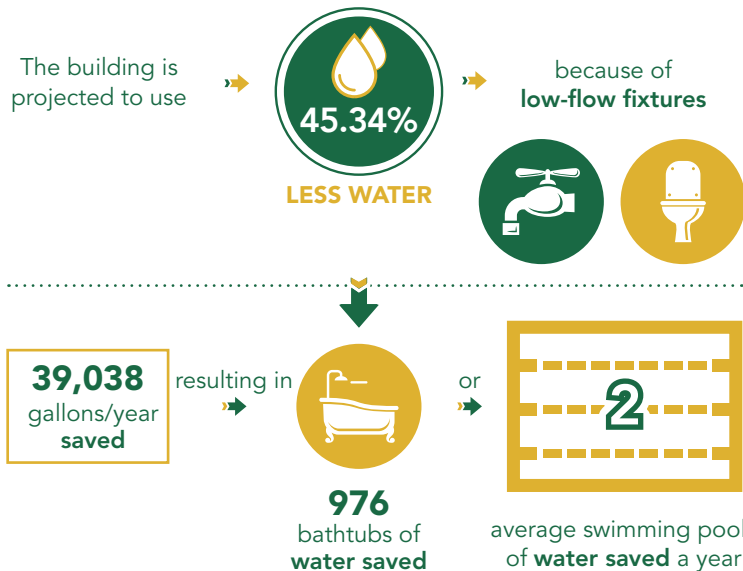


BY THE NUMBERS

SUSTAINABLE SITES: LOCATION & TRANSPORTATION

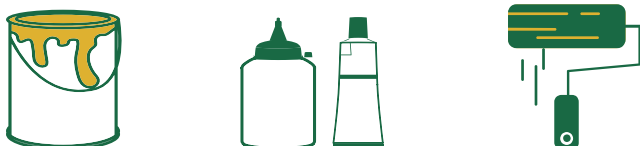


WATER EFFICIENCY



INDOOR ENVIRONMENTAL QUALITY

- Low-emitting paints, coatings, adhesives, sealants, flooring, and ceiling finishes were used throughout the project.

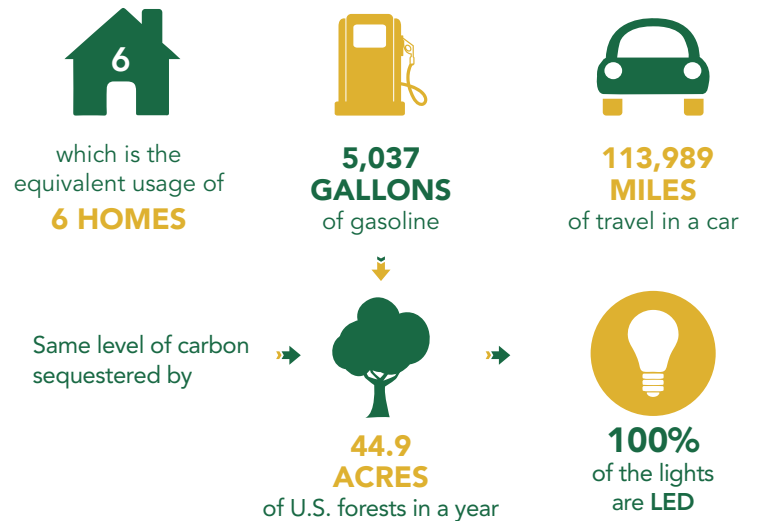


- Project is using **MERV 13 filters**, an extra effective air filter to ensure occupant comfort through clean air

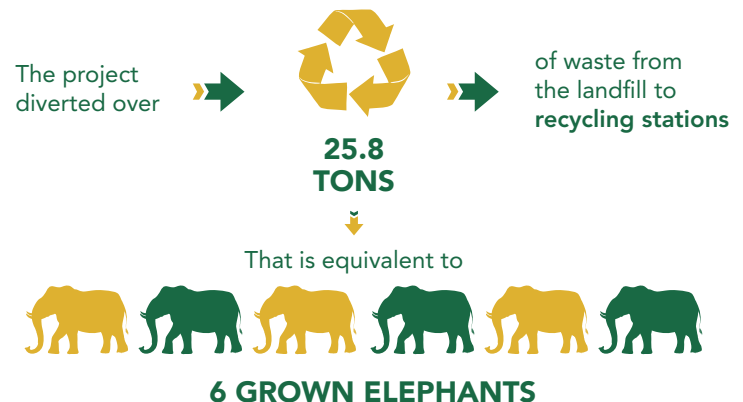
ENERGY & ATMOSPHERE



44.8 TONS of CO₂



MATERIALS AND RESOURCES



Over **37.5%** of the materials used to fit out the built environment were recycled material from various sources.

LEED Consultant:
Emerald Built Environments

